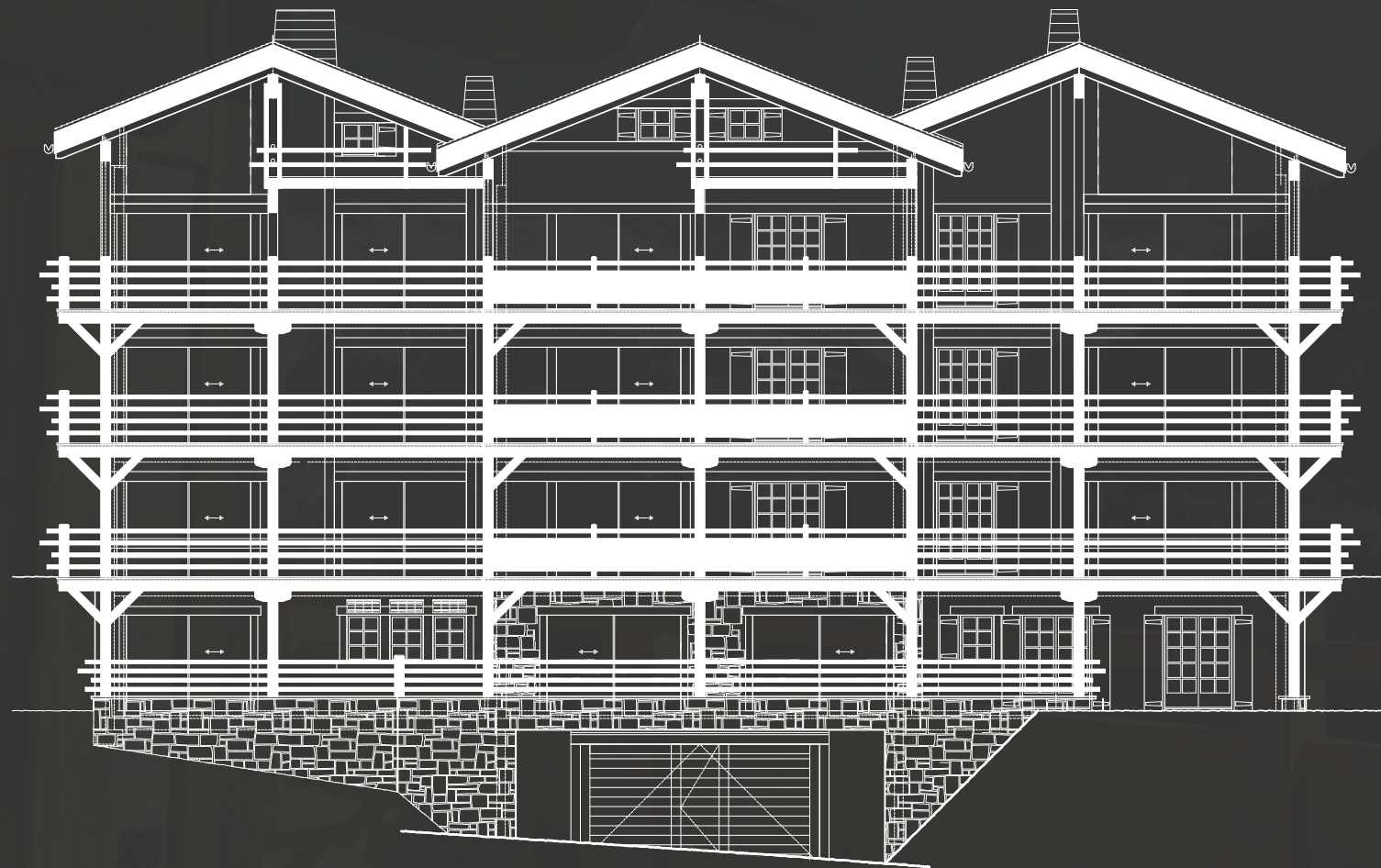


Grand apartments elevation



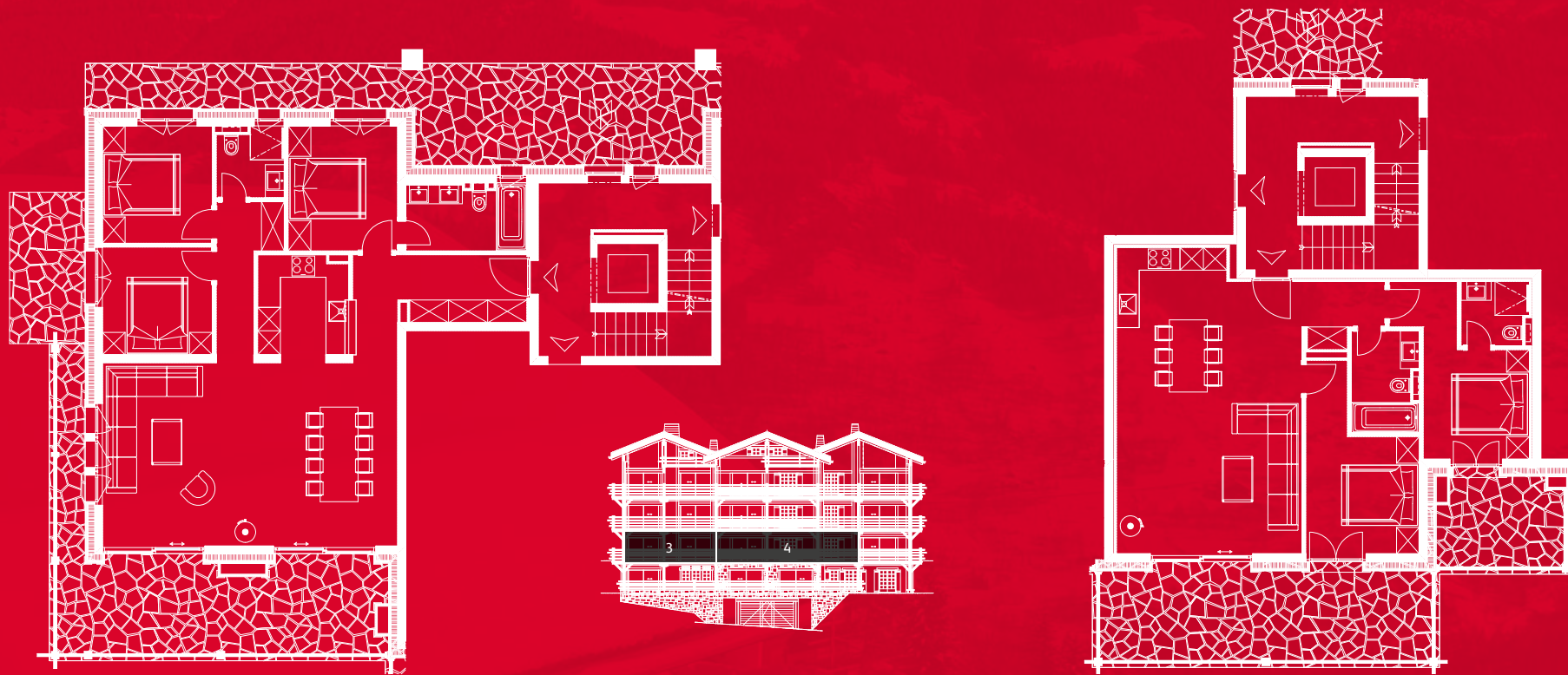
Apartments 1 + 2



- Spec**
- + 2 bedrooms
 - + 2 bathrooms
 - + 97.3 m² living area
 - + 36.6 m² terraces
 - + South-facing
 - + Traditional craftsmanship
 - + Fully managed
 - + Custom designed interiors

- Spec**
- + 2 bedrooms
 - + 2 bathrooms
 - + 81.7 m² living area
 - + 40 m² terraces
 - + South-facing
 - + Traditional craftsmanship
 - + Fully managed
 - + Custom designed interiors

Apartments 3 + 4



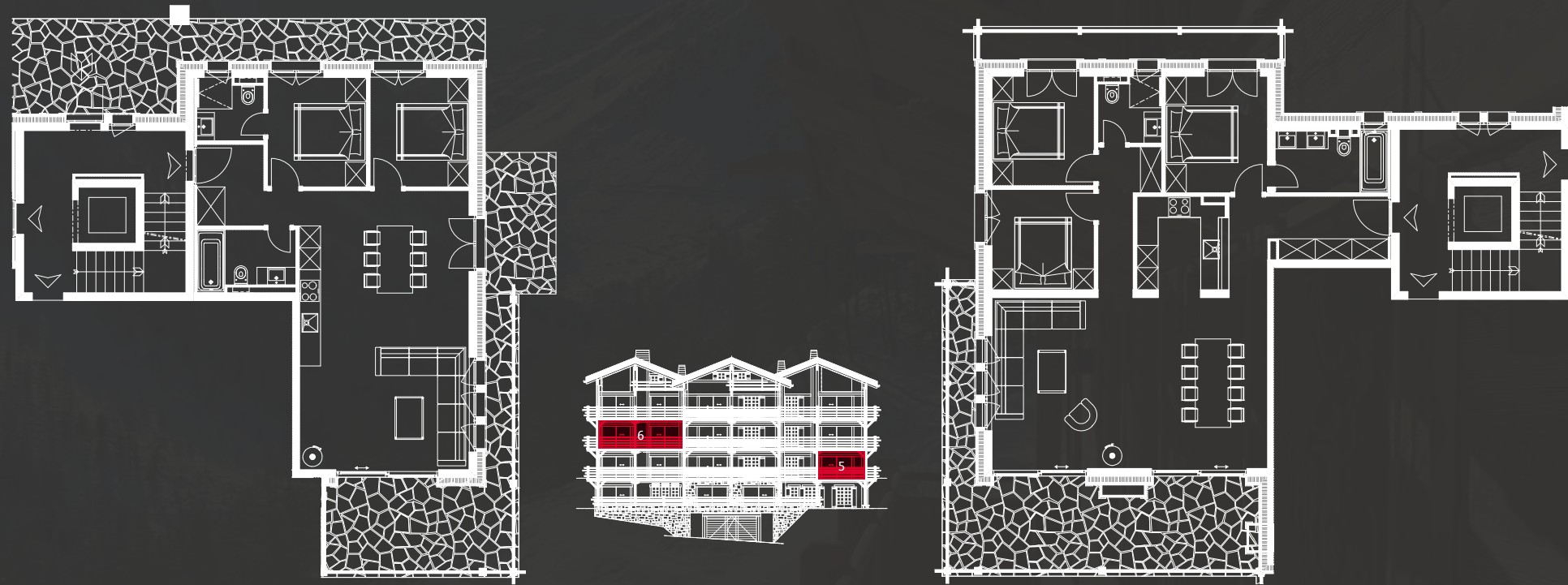
Spec

- + 3 bedrooms
- + 2 bathrooms
- + 115.8 m² living area
- + 34 m² terraces
- + South, north & west facing terraces
- + Traditional craftsmanship
- + Fully managed
- + Custom designed interiors

Spec

- + 2 bedrooms
- + 2 bathrooms
- + 84.9 m² living area
- + 32.1 m² terraces
- + South & north facing terraces
- + Traditional craftsmanship
- + Fully managed
- + Custom designed interiors

Apartments 5 + 6



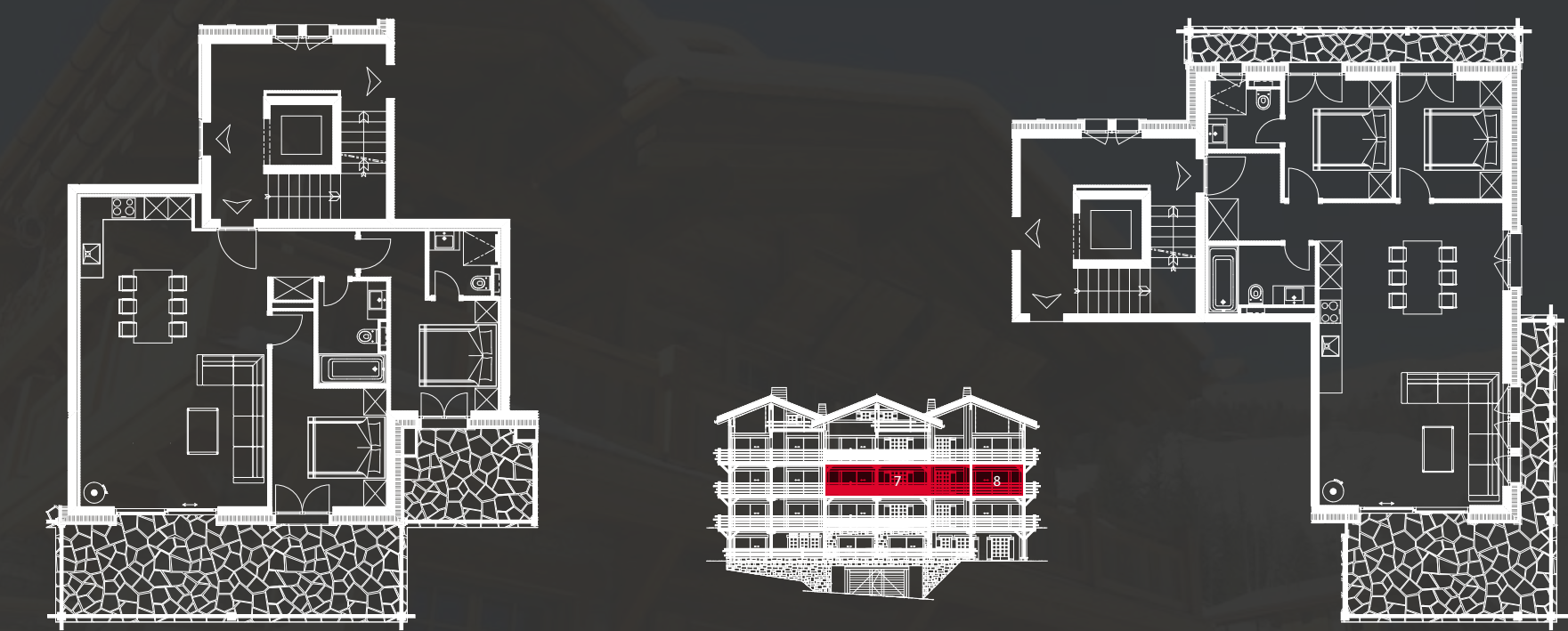
Spec

- + 2 bedrooms
- + 2 bathrooms
- + 84.9 m² living area
- + 24.8 m² terraces
- + South, north & east facing terraces
- + Traditional craftsmanship
- + Fully managed
- + Custom designed interiors

Spec

- + 3 bedrooms
- + 2 bathrooms
- + 115.8 m² living area
- + 36.9 m² terraces
- + South & west facing terraces
- + Traditional craftsmanship
- + Fully managed
- + Custom designed interiors

Apartments 7 + 8



Spec

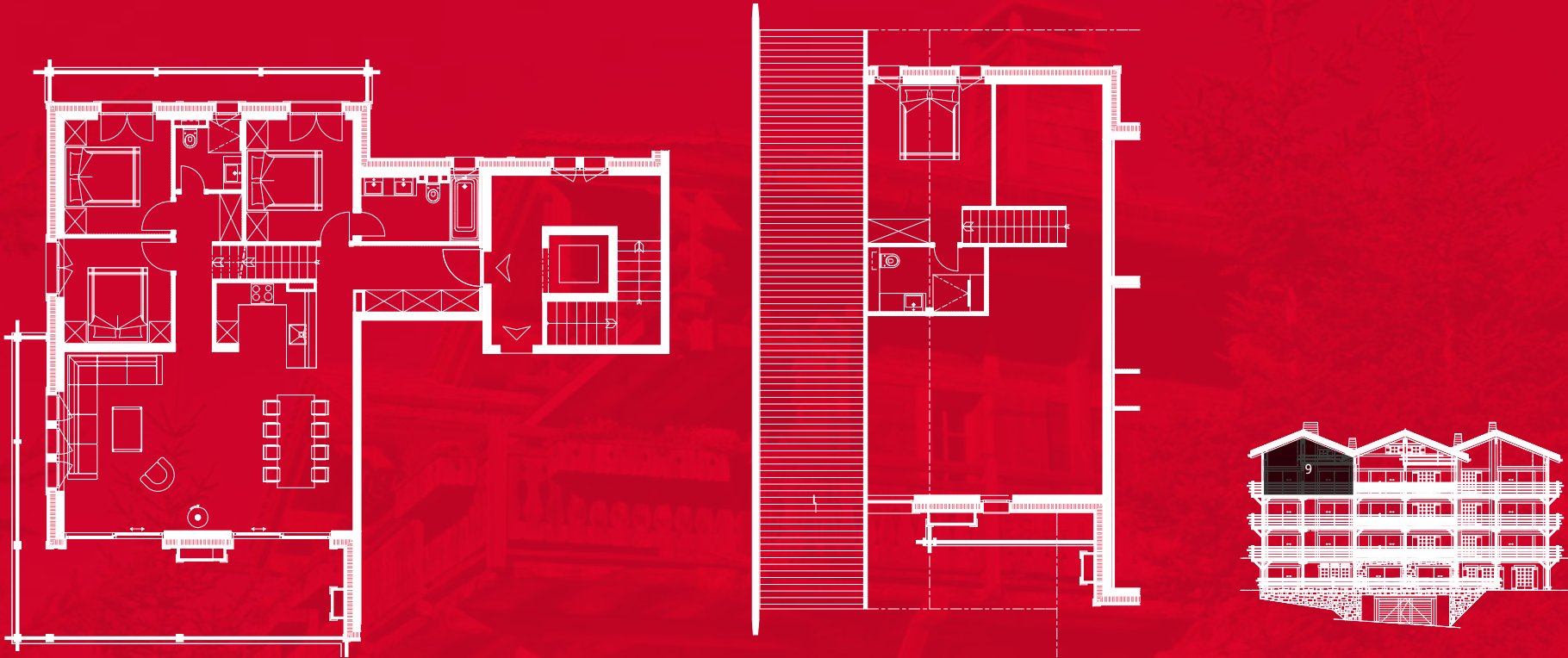
- + 2 bedrooms
- + 2 bathrooms
- + 84.9 m² living area
- + 32.1 m² terraces
- + South facing terraces
- + Traditional craftsmanship
- + Fully managed
- + Custom designed interiors

markwarnerproperty.com

Spec

- + 2 bedrooms
- + 2 bathrooms
- + 84.9 m² living area
- + 27.7 m² terraces
- + South, north & east facing terraces
- + Traditional craftsmanship
- + Fully managed
- + Custom designed interiors

Penthouse Apartment 9



Spec

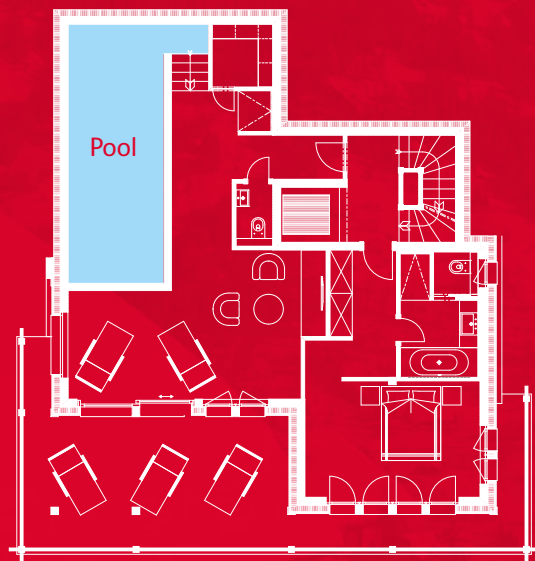
- + 4 bedroom duplex
- + 2 bathrooms
- + 132.9 m² living area
- + 36.9 m² terraces
- + South, west & north facing terraces
- + Traditional craftsmanship
- + Fully managed
- + Custom designed interiors

Les Chalets d'Adelaïde
GRIMENTZ • SWITZERLAND

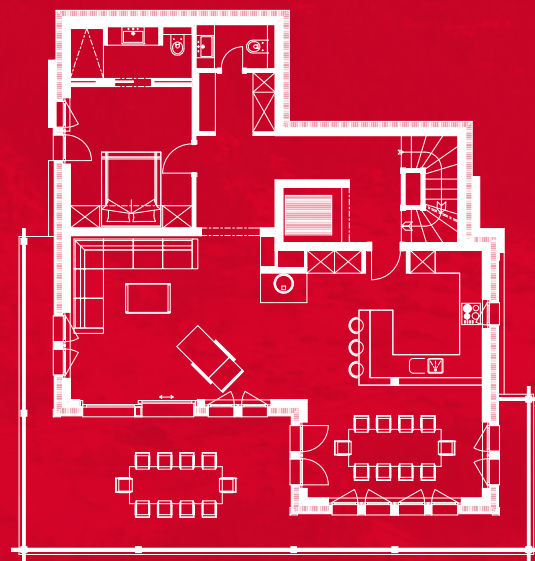
Chalets H, I & J*



Ground floor



1st floor



2nd floor

Spec

- + 5 bedrooms
- + 4 bathrooms
- + 272 m² living area
- + 51.2 m² terraces
- + Choice of plots
- + Hand crafted interiors
- + Custom designed
- + Swimming pool

*alternative chalets plans are available on request

markwarnerproperty.com

South & East elevations



Les Chalets d'Adelaïde
GRIMENTZ • SWITZERLAND