



mw property
mark warner.

Les Chalets d'Adelaïde

GRIMENTZ + SWITZERLAND



markwarnerproperty.com

Investing in Switzerland

Switzerland is widely regarded as one of the most safe and stable economies globally in which to invest.

Since the onset of the credit crisis, Switzerland has increasingly been the destination of choice for property investors looking to invest in the European ski property market but away from the wider turmoil in the Eurozone.

Furthermore, the new 'Lex Weber' legislation now limits the number of properties that can be sold to foreign buyers in any particular region. Since most of the key ski regions already exceed this limit, future supply will be limited to the existing housing stock or developments, such as Les Chalets d'Adelaïde, that were granted planning consent prior to the change in law.

Since the SNB cut interest rates to near zero, borrowing rates now start from just 1.2% with Swiss banks willing to lend up to 70% of the value of the a property.

Low borrowing rates, high altitude skiing, a growing summer tourism industry, and a restricted supply of property are all helping to make Swiss property investment an increasingly attractive proposition.

Les Chalets d'Adelaïde
GRIMENTZ + SWITZERLAND



Grimentz is the most charming ski resort I have ever been to and Les Chalets d'Adelaide offers terrific value for money compared to the other big-name Swiss resorts.

Liz Rowlinson – The Times

markwarnerproperty.com

Grimentz - discover the undiscovered

Grimentz is situated at the end of the beautiful Val D'Anniviers – a stunning valley that includes the nearby resorts of Zinal and St Luc.

Grimentz village lies high up on a sunny plateau and dates back to the 15th century. This picture perfect resort retains many original chalets and farm buildings from this period and, together with its historic centre, gives the village a unique and authentic charm.

Grimentz has long retained a cult following among local ski guides who, on their days off, would flock here from the surrounding resorts to enjoy the untracked powder and uncrowded pistes.

As a working village, Grimentz is a popular destination throughout the year with locals and tourists enjoying the incredible vistas along the well-marked hiking and biking trails.

The mountain huts and high-alpine lakes make great spots for a well-earned lunch while enjoying the views of the surrounding 4,000m peaks.

Les Chalets d'Adelaide
GRIMENTZ • SWITZERLAND

Your new winter playground

At 1,540m Grimentz village is one of the highest ski resorts in the Alps with several lifts reaching a top altitude of 3,000m. The well-groomed pistes running back to the village ensure that it is usually open from early December right through till May.

The area had previously attracted little attention from the wider European ski market that flock to the nearby resorts of Zermat, Verbier and Nendaz.

However, all this is now beginning to change since Switzerland's largest single span cable car opened in 2014 connecting Grimentz to nearby Zinal. In the process they have created a vast 220km ski network that is now a serious rival to the more established resorts nearby.

For keen off-piste skiers, Grimentz has always been the destination of choice for those looking to escape the crowds and find some easily accessible untracked powder. With no crowds you can be skiing 'fresh tracks' for several days after each snowfall.

markwarnerproperty.com

“

Alpine charm, powder snow and a reliable winter season: Grimentz is the Swiss resort that ticks all the best boxes. Chalets d'Adelaide combines the tradition of this delightful resort with contemporary mountain living.

Cathy Hawker – London Evening Standard

Les Chalets d'Adelaide
GRIMENTZ + SWITZERLAND



Les Chalets d'Adelaïde in morning light

Entrance



Traditional craftsmanship



Stunning views



Les Chalets d'Adelaïde

Les Chalets d'Adelaïde is a collection of luxury chalets and apartments in the very best location in Grimentz – right beside the piste and just a short walk to the centre of the village and the new Zinal cable car link.

Apartments range from 81m² two bedroom apartments right up to large 132m² four-bedroom duplex penthouses. Luxury chalets range in size from 163m² to 272m² and can be built to your own specification with 4-5 bedrooms, indoor swimming pools, private spas and vast sun terraces. Once completed, buyers will have use of a new boutique hotel with spa area and concierge facilities.

All the apartments and chalets were granted planning permission prior to the introduction of the new 'Lex Weber' laws meaning that this is now one of the last opportunities for foreign buyers to purchase a new property in the village. For buyers wishing to rent out their property we are able to offer a full rental and management service via our local partners.



Perfect for entertaining

Luxurious bathrooms

Comfortable interiors



A balcony with a view

Your home from home

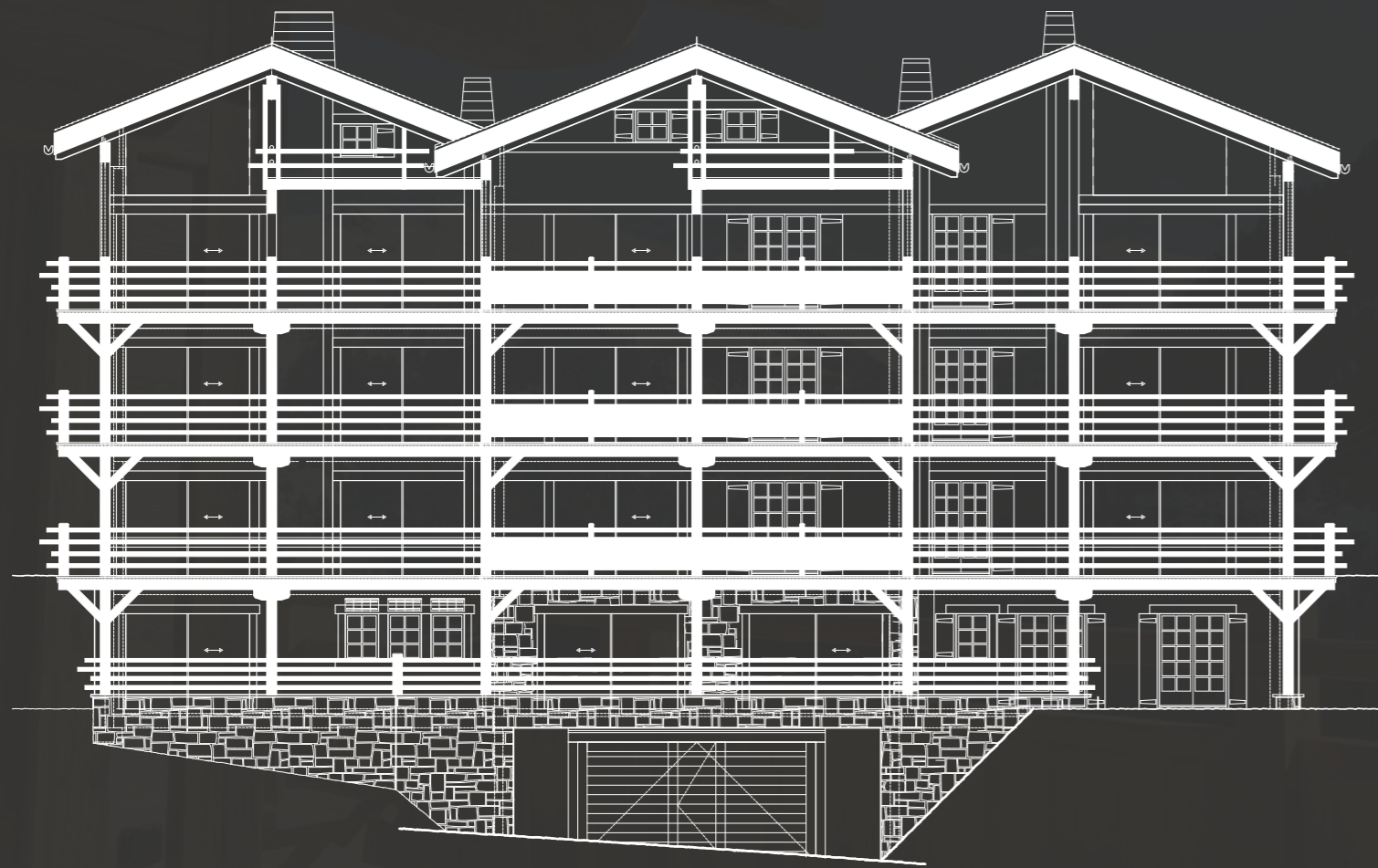
Les Chalets d'Adelaide have been lovingly designed and make extensive use of locally sourced wood and stone while maintaining a modern and contemporary feel.

The apartment and chalet designs have been thoughtfully created to reflect the unique alpine environment and charm that makes Grimentz so unique.

Each property can be individually tailored to your own requirements and offer you the chance to work with the local architect to tweak the design to your own specifications. Larger chalets can include indoor swimming pools, private spa areas and four to five bedrooms as desired.

All the properties come with large terraces as standard, optional hot tub, floor-to-ceiling windows and are finished with the highest quality natural materials.

Grand apartments elevation



markwarnerproperty.com

Apartments 1 + 2



Spec

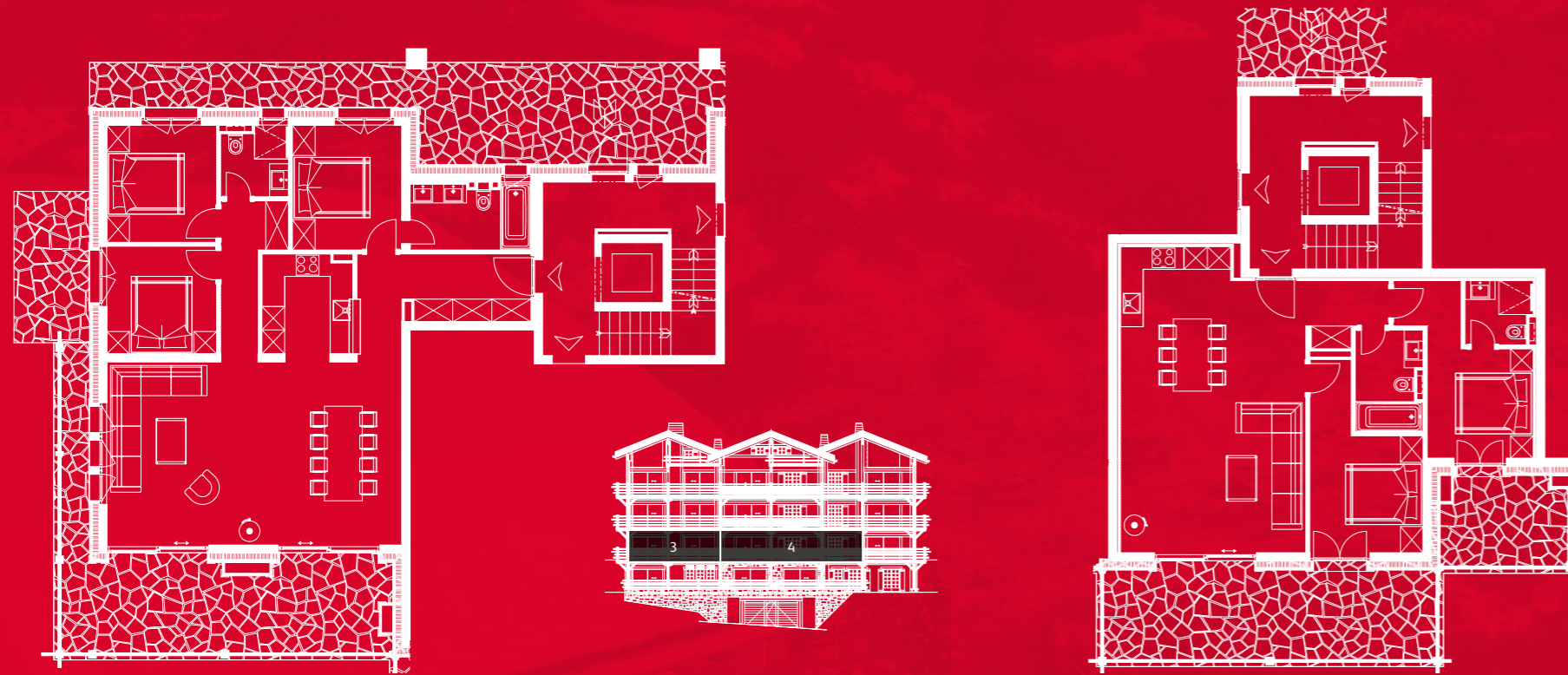
- + 2 bedrooms
- + 2 bathrooms
- + 97.3 m² living area
- + 36.6 m² terraces
- + South-facing
- + Traditional craftsmanship
- + Fully managed
- + Custom designed interiors

Spec

- + 2 bedrooms
- + 2 bathrooms
- + 81.7 m² living area
- + 40 m² terraces
- + South-facing
- + Traditional craftsmanship
- + Fully managed
- + Custom designed interiors

Les Chalets d'Adelaïde
GRIMENTZ + SWITZERLAND

Apartments 3 + 4



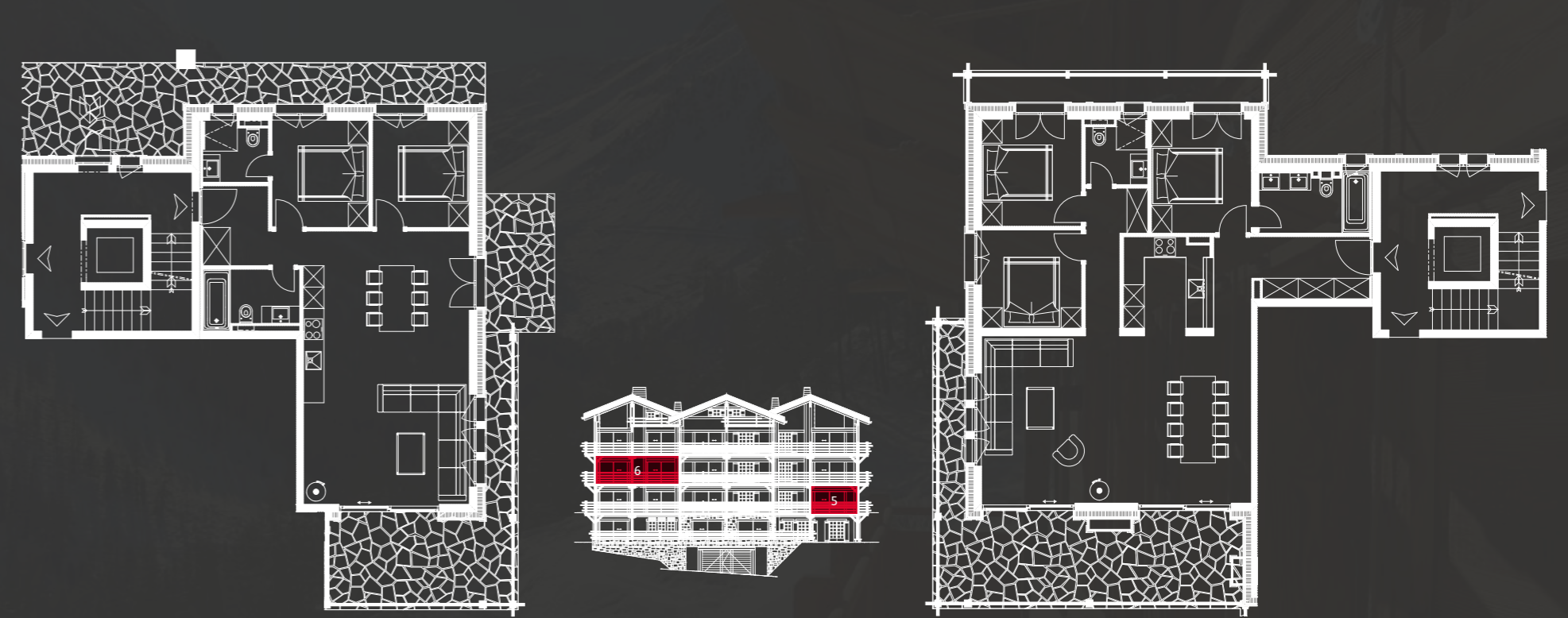
Spec

- + 3 bedrooms
- + 2 bathrooms
- + 115.8 m² living area
- + 34 m² terraces
- + South, north & west facing terraces
- + Traditional craftsmanship
- + Fully managed
- + Custom designed interiors

Spec

- + 2 bedrooms
- + 2 bathrooms
- + 84.9 m² living area
- + 32.1 m² terraces
- + South & north facing terraces
- + Traditional craftsmanship
- + Fully managed
- + Custom designed interiors

Apartments 5 + 6



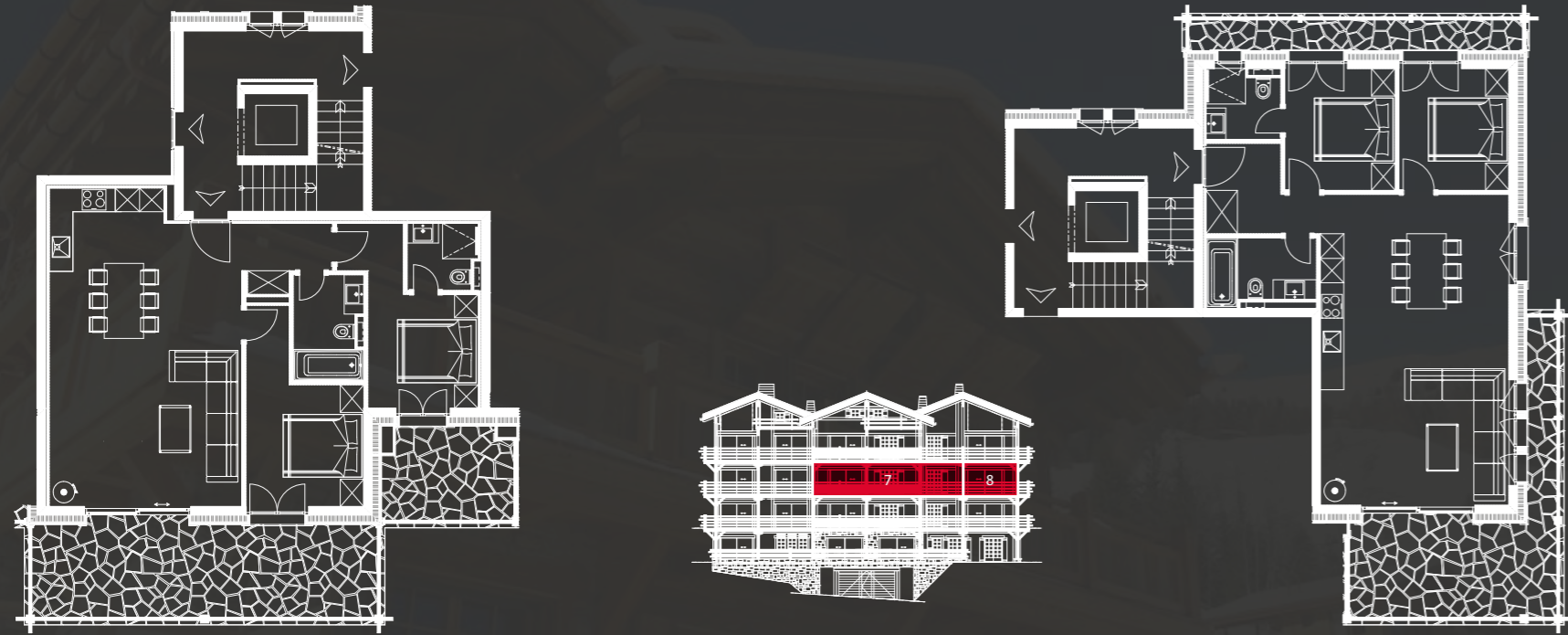
Spec

- + 2 bedrooms
- + 2 bathrooms
- + 84.9 m² living area
- + 24.8 m² terraces
- + South, north & east facing terraces
- + Traditional craftsmanship
- + Fully managed
- + Custom designed interiors

Spec

- + 3 bedrooms
- + 2 bathrooms
- + 115.8 m² living area
- + 36.9 m² terraces
- + South & west facing terraces
- + Traditional craftsmanship
- + Fully managed
- + Custom designed interiors

Apartments 7 + 8



Spec

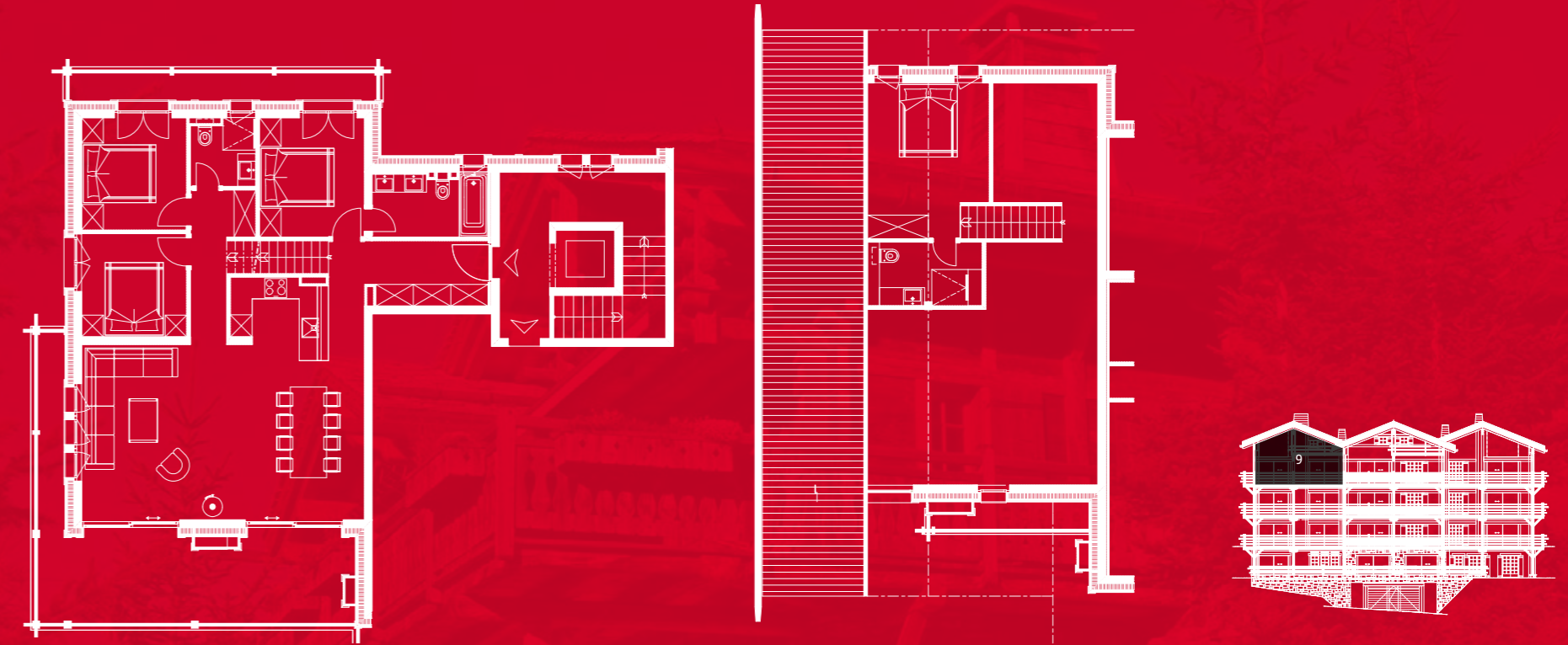
- + 2 bedrooms
- + 2 bathrooms
- + 84.9 m² living area
- + 32.1 m² terraces
- + South facing terraces
- + Traditional craftsmanship
- + Fully managed
- + Custom designed interiors

Spec

- + 2 bedrooms
- + 2 bathrooms
- + 84.9 m² living area
- + 27.7 m² terraces
- + South, north & east facing terraces
- + Traditional craftsmanship
- + Fully managed
- + Custom designed interiors

markwarnerproperty.com

Penthouse Apartment 9



Spec

- + 4 bedroom duplex
- + 2 bathrooms
- + 132.9 m² living area
- + 36.9 m² terraces
- + South, west & north facing terraces
- + Traditional craftsmanship
- + Fully managed
- + Custom designed interiors

Les Chalets d'Adelaïde
GRIMENTZ + SWITZERLAND

Chalets H, I & J*



Ground floor



1st floor



2nd floor

Spec

- + 5 bedrooms
- + 4 bathrooms
- + 272 m² living area
- + 51.2 m² terraces
- + Choice of plots
- + Hand crafted interiors
- + Custom designed
- + Swimming pool

*alternative chalets plans are available on request

markwarnerproperty.com

South & East elevations



Les Chalets d'Adelaïde
GRIMENTZ + SWITZERLAND

Les Chalets d'Adelaïde

GRIMENTZ + SWITZERLAND



Mark Warner Property, 20 Kensington Church Street, London, W8 4EP

☎ +44 (0) 20 7692 0786 ✉ enquiries@markwarnerproperty.com

markwarnerproperty.com

DISCLAIMER Gonville Homes Ltd, Mark Warner Ltd, their clients and any joint agents give notice that: Quoted prices are subject to fluctuations in exchange rates. Please contact an agent for an up-to-date price. They are not authorised to make or give any representations or warranties in relation to the property either here or elsewhere, either on their own behalf or on behalf of their client or otherwise. They assume no responsibility for any statement that may be made in these particulars. These particulars do not form part of any offer or contract and must not be relied upon as statements or representations of fact. In particular they neither have nor assume responsibility for any statement concerning the financial arrangements or the commercial scheme which may be made available by their clients or others to potential purchasers.

Any areas, measurements or distances are approximate. The text, photographs and plans are for guidance only and are not necessarily comprehensive. It should not be assumed that the property has all necessary planning, building regulation or other consents and Gonville Homes Ltd have not tested any services, equipment or facilities. Purchasers must satisfy themselves by inspection or otherwise and seek independent legal advice.

Created by mikegarlick.com